



ISCC PLUS Certificate

Certificate Number: ISCC-PLUS-Cert-CZ208-18342824

TÜV SÜD Czech s.r.o.

Novodvorská 994/138, 142 21 Prague 4, Czech Republic

certifies that

AL INVEST Břidličná, a.s.

TAPA Tábor

Kosova 1021, 390 02 Tábor, Czech Republic

complies with the requirements of the certification system

ISCC PLUS

(International Sustainability and Carbon Certification)

Place of the audit

(if different from the legal address of the system user as stated above; only applicable for traders and traders with storage):

n.a.

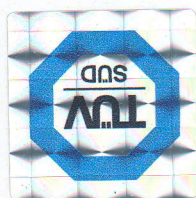
This certificate is valid from 25.11.2025 to 24.11.2026.

The site of the system user is certified as:

Final product refinement

The scope of the certificate includes the following chain of custody options:
(not applicable for paper traders)

Mass balance



Prague, 21.11.2025

Place and date of issue

Stamp, Signature of issuing party

The issuing Certification Body is responsible for the accuracy of this document.

Version / Date: 1 (no adjustments) / 21.11.2025

TÜV SÜD Czech s.r.o. • Novodvorská 994 • 142 21 Prague 4 • Czech Republic • certification.cz@tuvsud.com



Annex I to the certificate:

Sustainable materials handled by the certified site

(This annex is applicable for all scopes except of Trader, Trader with storage, Warehouse, Logistic centres, MTBE and ETBE)

This annex is only valid in connection with the certificate:

ISCC-PLUS-Cert-CZ208-18342824 issued on 21.11.2025

Input material	Output material	Add-ons (voluntary) ¹⁾	Raw material category ²⁾	SAI FSA ³⁾	FEFAC ⁴⁾
Foils / films (PP)	Packaging (PP)	–	Bio Bio-circular Circular	N.A.	N.A.
Foils / films (PET)	Packaging (PET)	–	Bio Bio-circular Circular	N.A.	N.A.
¹⁾ ISCC PLUS add-ons (voluntary application, see www.iscc-system.org for further information): <ul style="list-style-type: none">• 202-04: Food Security Standard• 202-07: Low ILUC-risk feedstock• 205-01: GHG emission requirements• 205-02: Consumables• 205-03: Non GMO for food and feed• 205-04: Non GMO for technical markets					
²⁾ Bio raw materials comply with the ISCC Principles 1 – 6 for the cultivation and harvesting of sustainable biomass. Bio-circular and circular raw materials meet the ISCC definition of waste or residue, i.e. it was not intentionally produced and not intentionally modified, or contaminated, or discarded, to meet the definition of waste or residue. For circular raw materials, the voluntary information about PIR (post-industrial recycling) or PCR (post-consumer recycling) material can be stated in brackets.					
³⁾ Farm Sustainability Assessment (FSA) was developed by the Sustainable Agriculture Initiative (SAI) SAI Gold Compliance: ISCC Compliant can be claimed as “SAI FSA 3.0 Gold Level Equivalence”					
⁴⁾ FEFAC: European Feed Manufacturers' Federation. ISCC compliant materials can be claimed as “in line with FEFAC soy sourcing guidelines 2015”					

